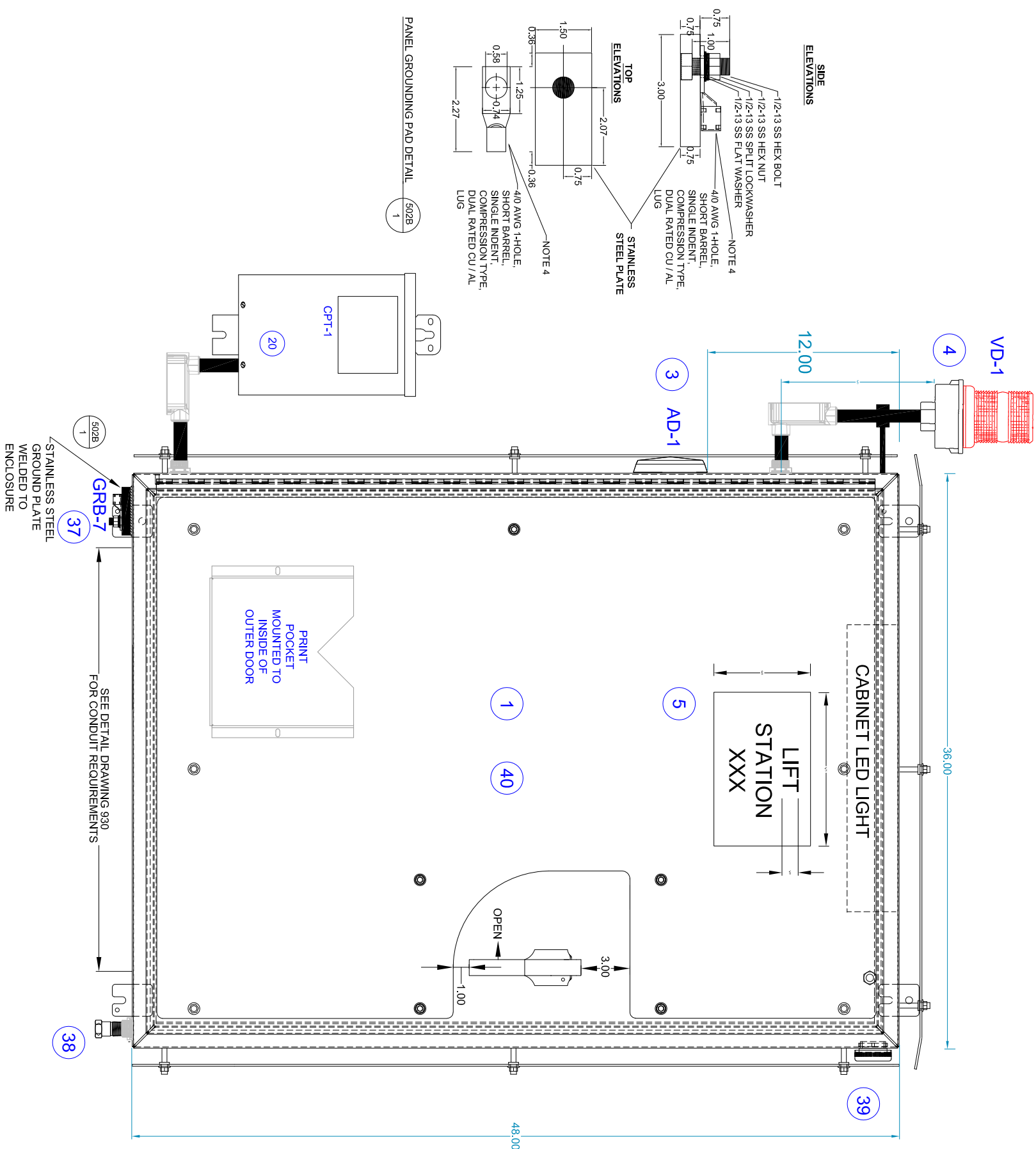
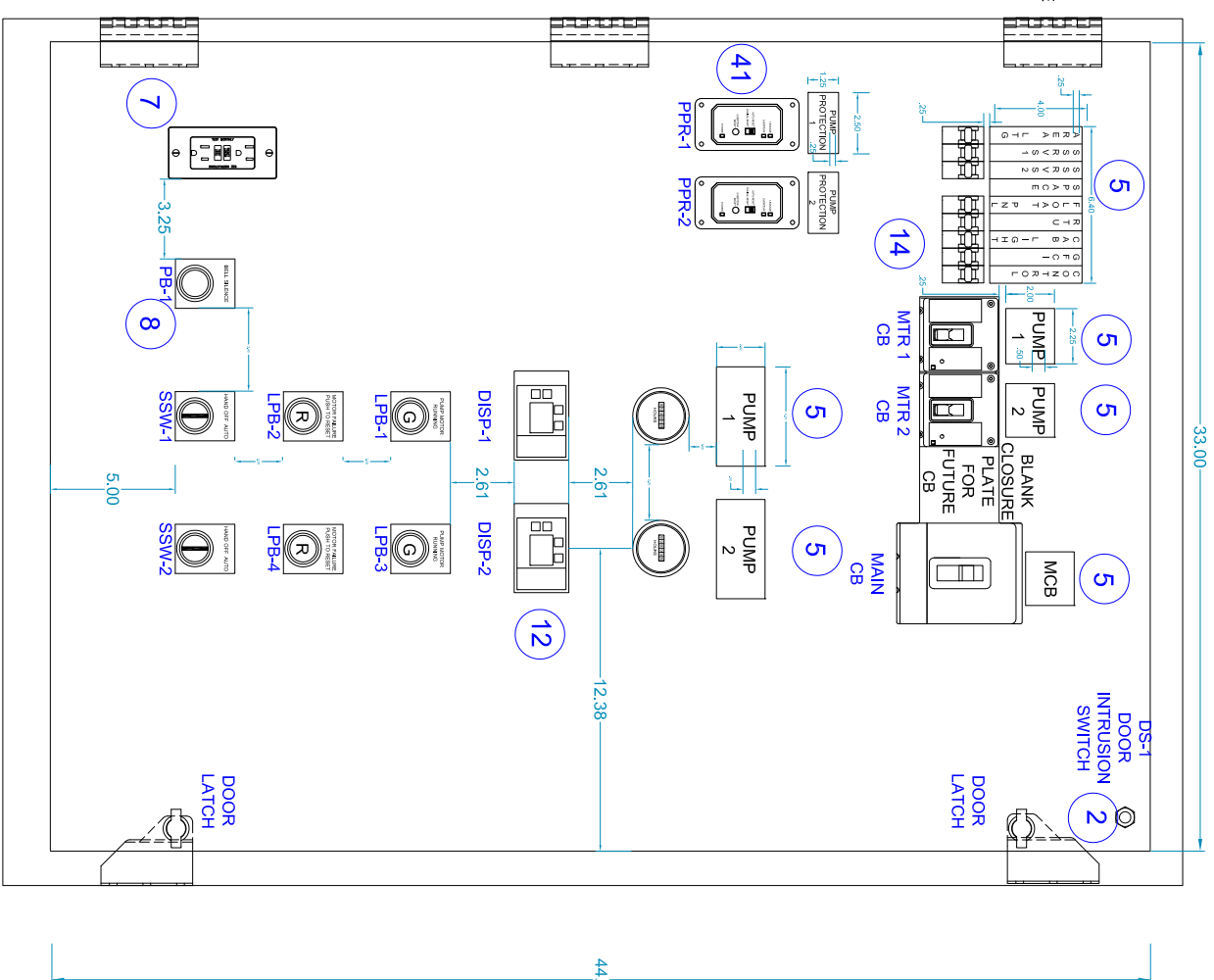



**DIMENSIONS IN
INCHES**



- NOTES:
1. MOTOR CONTROL WIRING LIMITED TO A MAXIMUM OF: 15 HP @ 230 VOLTS 25 HP @ 460 VOLTS
 2. FRONT SUNSHIELD IS NOT ILLUSTRATED FOR CLARITY. FRONT SHIELD ON ENCLOSURE IS REQUIRED AS PER COO SPECIFICATION.
 3. COMPONENT IDENTIFICATION REFLECTED ON BILL OF MATERIALS DRAWING # 504
 4. # 6 1-HOLE, SHORT BARREL, SINGLE INDEPEND. COMPRESSION TYPE, DUAL RATED CU / AL LUG FOR GRB-6.



SCALE: N.T.S.		-		REVISIONS AS PER MEETING		09-09-2013		JG	
DESIGN: JAG / LS									
DRAWN BY: JG									
APPROVED BY: WW		NO		REVISION		DATE		BY	
<div style="display: flex; justify-content: space-between; align-items: center;"> <div style="text-align: center;">  <p> WASTEWATER DIVISION, INDUSTRIAL AUTOMATION GROUP _____ CITY OF ORLANDO, FLORIDA </p> </div> <div style="text-align: center;"> <p>TITLE:</p> <p> LIFT STATIONS STANDARDS 25 HP TO < 50 HP DUPLEX SSRVS PUMP CONTROLLER FOR STATIONERY GENERATOR FRONT AND INNER PANEL ELEVATIONS </p> </div> <div style="text-align: center;"> <p>SHEET</p> <p>502B</p> </div> </div>									